

MAZIC CL

Product Guide



Aug 2023

Contents

01 MAZIC CL Story

02 MAZIC CL Design

03 MAZIC CL System

04 MAZIC CL Features

05 MAZIC CL Use Cases

06 MAZIC CL Specification



MAZIC CL is a cost-effective type POS which is suitable for hospitality market.

MAZIC CL is a POS made by adding the meaning of Classic, which means high quality and standard, to **MAZIC**, which includes high-end specifications.



MAZIC

- Durable material and design
- Replaceable system box
- Height adjustable dual-hinge
- Heat pipe design for thermal management



MAZIC CL

- Slim design and thin bezel
- Compatible with External I/O boxes
- Reduced packaging size reduces logistics costs
- Fanless efficient system operation

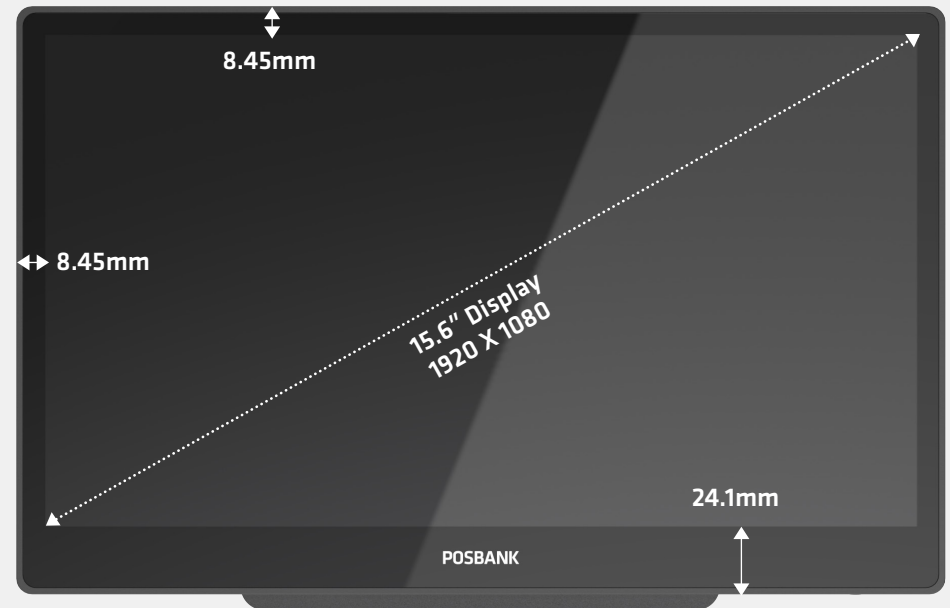
MAZIC CL Design

- Stylish design with thin monitor
- Thin bezel monitor for contemporary style



Slim Design

Designed with a sturdy dual hinge structure, you can adjust the screen angle as well as the height.



Ultra thin bezel

With a much thinner bezel width than MAZIC, it has a contemporary design display.

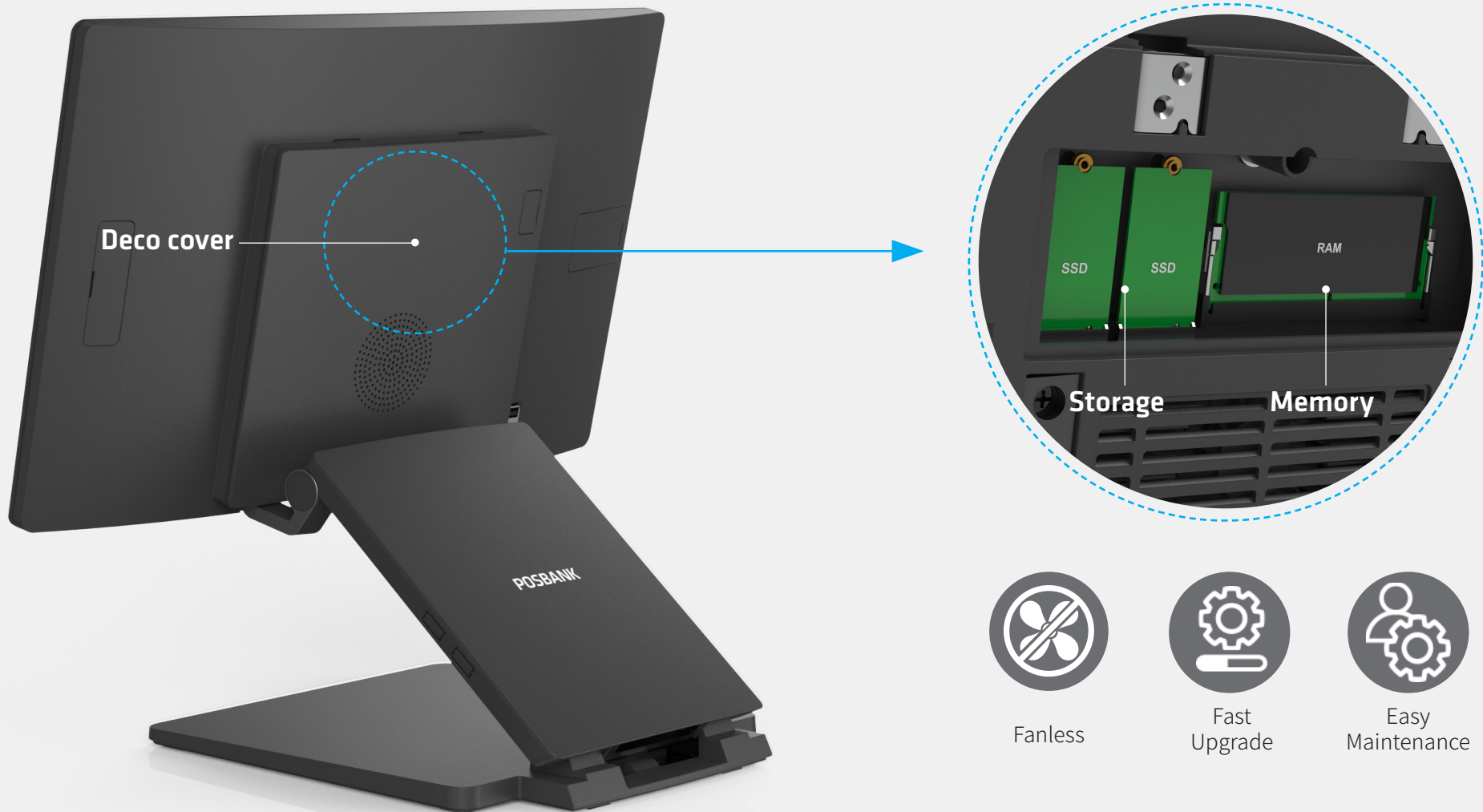


7H Industrial-grade touch glass

Scratch resistant, high definition and improved touch response with higher resolution and visibility.

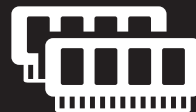
MAZIC CL Design

- Practical with easy system upgrade by replacing memory and storage
- Self-management can save maintenance costs



MAZIC CL System

- Intel's latest CPUs, the 11th generation : Core i5-1117G / i3-1115G4, Celeron J6412
- All specifications of high-end products can be applied
- Efficient system with fanless processor



Less power consumption and heat Maximized Performance

4GB Standard, DDR4 3200 MT/s,
1 x Socket x SODIMM (Max. 32GB)

Powerful DDR4 Memory

DDR4 3200 MT/s

DDR3L 1600 MT/s



Very small size Overwhelming speed

Form Factor : NVMe M.2 2242-D2-M
(No capacity limit.)
Mountable quantity: Up to 2 units can be installed.
* Factory Default : NVMe M.2 2242 128GB

5.3x faster NVMe™ SSD

NVMe M.2

SATA 3 (6Gb/s)

MAZIC CL Features

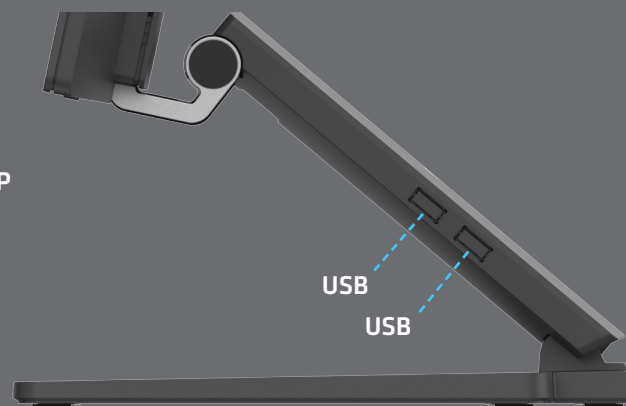
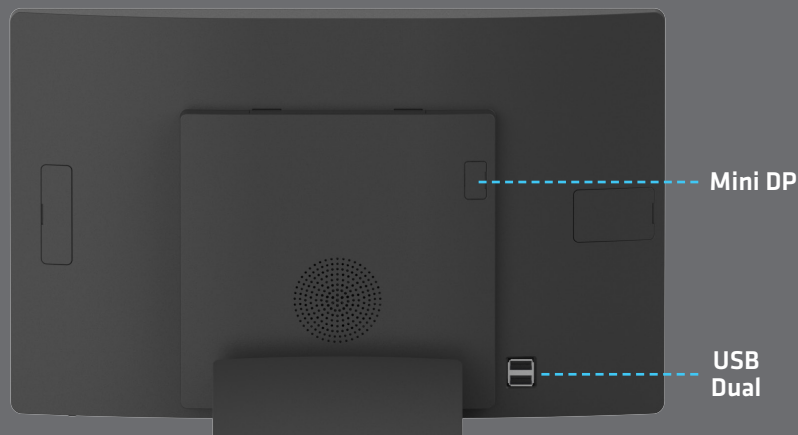
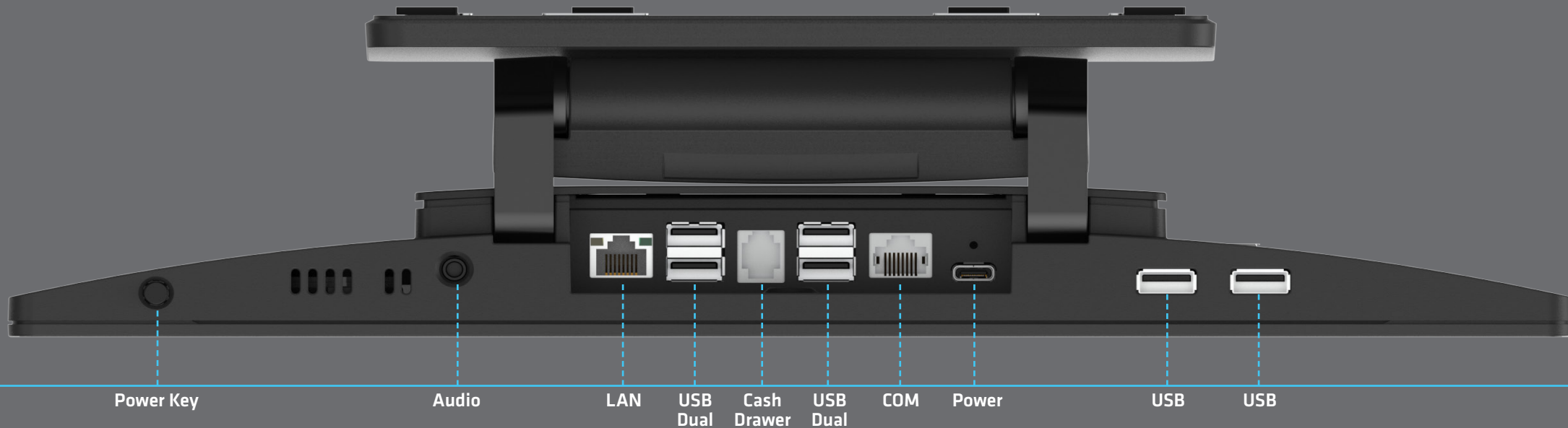
POSBANK®

- Height adjustable with dual hinges
- Reduced packaging size reduces logistics costs



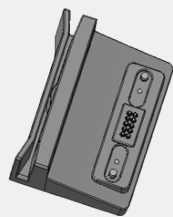
MAZIC CL Features - Interface

- Intel's latest CPUs, the 11th generation : Core i5-1117G / i3-1115G4, Celeron J6412
- All specifications of high-end products can be applied

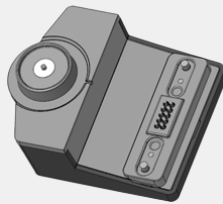


MAZIC CL Features - Options

- Height adjustable with dual hinges
- Reduced packaging size reduces logistics costs



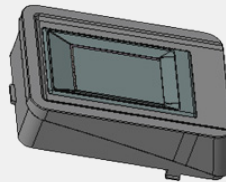
MSR



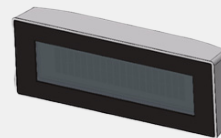
i-Button



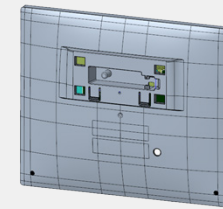
Addimat



Finger Printer



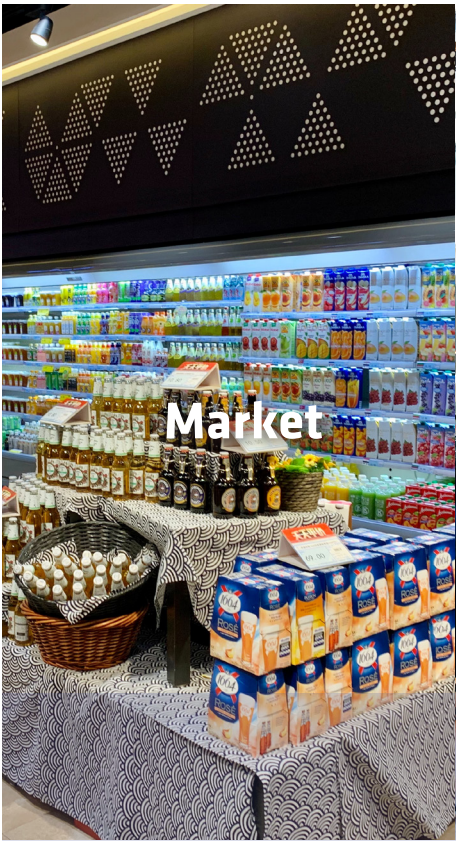
VFD



2nd DP



External I/O Box



Market



Retail



Restaurant



Shop



Bar & Pub

Experience MAZIC CL filled with ideal performance for retail & hospitality.

MAZIC CL Specification

| MAZIC CL | | |
|-------------------|--|--------------------------------|
| | MAZIC CL-1560 | MAZIC CL-1500 |
| System | | |
| Processors | Intel® Core™ i5-1135G7 Processor 8M Cache, up to 4.20 GHz Intel® Core™ i3-1115G4 Processor 6M Cache, up to 4.10 GHz Intel® Celeron® Processor J6412 1.5M Cache, up to 2.60 GHz | |
| Chipset | Intel® Tiger Lake Intel® Elkhart Lak | |
| Memory | 4GB Standard, DDR4 3200 MT/s, 1 x SODIMM Socket (Max. 32GB) | |
| Storage | 1. Form Factor NVMe M.2 2242-D2-M (No capacity limit.) 2. Mountable quantity: Up to 2 units can be installed. * Factory Default : 1 x NVMe M.2 2242 128GB | |
| RAID | RAID 0,1 | |
| Operating Systems | Windows 10 IoT Enterprise LTSC | |
| Audio | HD Audio Codec | |
| Display | | |
| Type | 15.6" FHD TFT LCD, LED Backlight | 15" TFT LCD, LED Backlight |
| Resolution | 1920 x 1080 | 1024 x 768 |
| Brightness | 300 cd/m ² (typ.) | 400 cd/m ² (typ.) |
| Touchscreen | Projected Capacitive Touch | Projected Capacitive Touch, AF |
| Interface | | |
| Display | 1 x Displayport (MiniDP) | |
| USB | 9, 2 x USB 3.0, 6 x USB 2.0, 1 x USB-C 3, Reserved for MSR, SCR, i-Button/Touch Controller | |
| Serial | 3, COM1 Reserved MSR/SCR, TX/RX only COM2 Reserved CDP, TX/RX only COM 3 RJ-45, Full Signal | |
| Cash Drawer Port | Projected Capacitive Touch | |
| Optinal I/O | 2 X USB 2.0 (Factory option) | |
| LAN | 1 x Gigabit Ethernet (RJ-45) | |
| Audio | 1 x Line-out | |
| Power DC-IN | USB-C | |
| Power | | |
| Power Supply | Adapter 12V, 5A (USB-C Plug) | |

MAZIC CL Specification

| MAZIC CL | | |
|-------------------------------------|--|-------------------------------|
| | MAZIC CL-1560 | MAZIC CL-1500 |
| Physical & Environmental | | |
| Operating Temperature | 0 °C ~ 60 °C at 10% to 90% Humidity | |
| Storage Temperature | -20 °C ~ 80 °C at 10% to 90% Humidity | |
| Memory | 4GB Standard, DDR4 3200 MT/s, 1 x SODIMM Socket (Max. 32GB) | |
| Dimensions (WxHxD) | 368 x 351 x 239 (mm), 14.4 x 13.8 x 9.4 (in) | |
| Packing Dimensions (WxHxD) | TBD | TBD |
| Net Weight | 3,780g, 8.33 lbs | 3,780g, 8.33 lbs |
| Packing Weight | TBD | 4,200g, 9.20 lbs |
| Certification | TBD | TBD |
| Color | Matte Dark Black / Pure White | Matte Dark Black / Pure White |
| Options & Peripherals | | |
| 2nd Displays | 9.7" (1024 x 768), 10.1" (1280 x 800), 13.3" (1920 x 1080) LCD Display, Optional Touchscreen | |
| Customer Display | VFD (20 Columns x 2 Lines) | |
| External I/O BOX | One option attachable at a time Option 1: 2 x 12V Powered USB 2.0 / 1 x 24V Powered USB 2.0 / 2 x RJ-45(Full Signal) Option 2: 1 x 12V Powered USB 2.0 / 1 x 24V Powered USB 2.0 / 2 x USB 2.0 / 2 x RJ-45(Full Signal) Option 3 : 1 x 12V Powered USB 2.0 / 4 x USB 2.0/ 2 x RJ-45 (Full Signal) Option 4 : 6 x USB 2.0 / 2 x RJ-45 (Full Signal) | |
| Storage | NVMe M.2 128G | |
| Magnetic Stripe Reader | Comply with ISO 7811, Support 1 & 2 & 3 Track | |
| Smart Card Reader | EMV Level 1 | |
| Dallas | Dallas i-button Reader | |
| Finger print | Yes | |
| Wall Mount Kit | VESA-Compatible, 100 x 100 (mm) | |
| Speaker | 1 x 1W (Mono) | |
| WiFi/BT | Combo Module, SMT (Factory Option) | |
| TPM | Support | |