



# **SUNMI**

# **80mm Kitchen Cloud**

# **Printer - Introduction**

# SUNMI KITCHEN CLOUD PRINTER – BUSINESS NEEDS

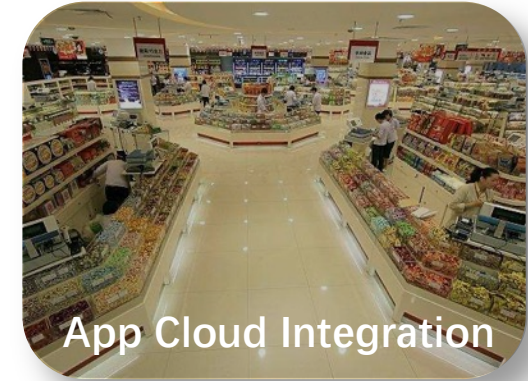
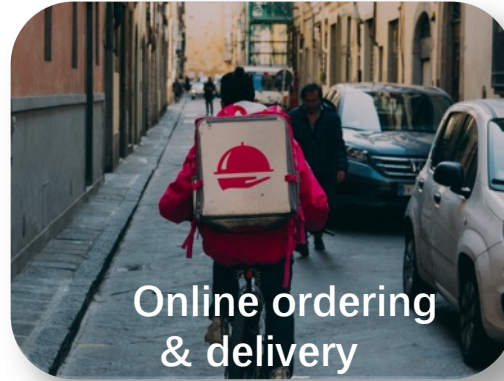
## “ MAKE PRINTING SIMPLE ”

- Integrate simple printing in your business operations & facilitates end-to-end processes
- Print from multiple channels on ONE device
- Make printing tickets fast and reliable
- Recover easily from any printing incident
- Simplify solution implementation and integration
- Add transaction transparency to your business



# SUNMI KITCHEN CLOUD PRINTER – USE CASES

## ADDRESSING DIFFERENT MARKETS:



Print orders and receipts directly from POS devices, food ordering platforms and web-based shops

- Auto accepts orders from local devices & cloud systems
- Print all orders in one printer
- Create detailed receipt with all necessary information
- Supporting Android, Apple or Windows POS systems & Application cloud

# SUNMI KITCHEN CLOUD PRINTER – MULTICHANNEL PRINTING

PROVIDES TWO WAYS TO PRINT ORDERS AND RECEIPTS:



1

Printing from a local device



2

Printing from an online ordering system  
(third-party cloud integration through open APIs)



# SUNMI KITCHEN CLOUD PRINTER –

## 1 LOCAL DEVICE PRINTING



**Classic connection**  
(LAN, USB)



**Wireless connection**  
(LAN, WIFI, Bluetooth, 4G)



### Advantages

- Reprint function (out of paper, cover opened)
- Supports global vertical font library
- More convenient static IP setting.
- No network cable needed (a USB cable would suffice)

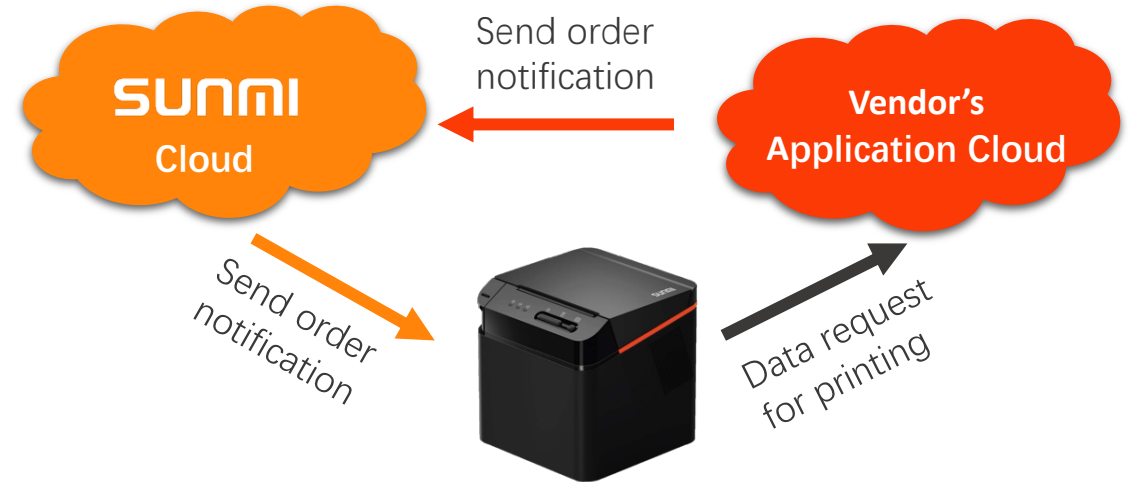
# SUNMI KITCHEN CLOUD PRINTER –

## 2 CLOUD PRINTING

### DIRECT PRINTING PROCESS



### CALLBACK PRINTING PROCESS



### Advantages

- Easy integration through open APIs
- Prevent from order missing
- Prevent from repetitive printing
- Supports 4G network
- Short development term. Software vendors equipped with certain development capabilities can complete interface joint-debugging in 2~3 days

# KITCHEN CLOUD PRINTER BENEFITS:

## FEATURE RICH & RUGGEDNESS



**250mm/s  
Print speed**

Print 2 orders per second in high speed, Auto-cutting, Tear free paper, Print after power failure, 1 click reprint.



**Network  
switch**

Automatically switches to the network with the best signal (LAN, Wi-Fi and 4G). Ensure stable data transmission & reduce manual operations.



**Human  
Voice TTS**

Supports mandarin & English human voice TTS. Ignore noisy environments, no missing order.



**Warning &  
Reminder**

Voice output & flashing light to warn users of a paper jam and reminder to print tickets.



**Water proof**

Prevent the splash water from getting inside and damaging the circuit board



**Insect proof**

Prevent insects from getting inside and damaging the circuit board.



**Oil resistant**

Oil resistant, the printer is easy to clean, making it the best choice for use in restaurant kitchens.



**Sturdy design**

Compact & sturdy design, the printer can be placed on any side or mounted on a wall.



# KITCHEN CLOUD PRINTER - VALUE PROPOSITION



“ Sunmi 80mm Kitchen cloud printer, on-demand printing in ONE device...

Facilitating operations while eliminating human error”





# SUNMI KITCHEN CLOUD PRINTER – TECHNICAL SPECIFICATION

## Print Parameters

Print Method: Line  
thermal Paper Width: 80mm  
Print Line Dots: 576 dots  
Effective Print Width: 72mm  
Print Speed: Max. 250mm/s  
Cutting Method: Entire/Partial  
(58mm paper compatible, need  
to Buy 58mm box)

## Wi-Fi

2.4GHz  
IEEE 802.11 b/g/n

## Port

Cash Drawer: RJ12 24V/1A  
USB: Type-C USB 2.0

## Font Library

Unicode character set  
UTF-8 encode  
GB18030 font library  
KSC5601 font library  
JIS0208 font library .etc

## Bluetooth

Protocol: BT4.2 BLE  
Frequency Band: 2.4GHz

## Status Reminder

Paper exhaustion,  
Out of paper,  
Paper Blockage,  
Paper Pick-Up,  
Network abnormal, Cover flip

## LED Indicator

Power Indicator: Green  
Network Indicator: Blue  
Abnormality Indicator: Red  
Reminder Indicator: White

## 4G

RF Frequency Band:  
TDD LTE B1/B3/B7/B8/B20  
FDD LTE B38/B39/B40/B41

## Ethernet

Rate: 100Mbps  
Port: RJ45

## Buttons

Function ×1  
Pairing ×1  
Volume ×2

## Speaker

Power 3W  
Volume ≥ 105dB



80mm printing  
250mm/s speed



Multiconnection (LAN,  
USB, Bluetooth, WIFI, 4G)



Light Indicator



Global vector font library



# SUNMI KITCHEN CLOUD PRINTER – CONFIGURATION

Type	Configuration	Differential function
NT310	USB + LAN	Basic version , Only USB and wired connection are supported
NT311	USB + LAN + Wi-Fi + BT	Contain basic version , in addition to supporting Wi-Fi and Bluetooth connection
NT312	USB + LAN + Wi-Fi + BT + 4G	Contain basic version , in addition to supporting Wi-Fi, Bluetooth and 4G connection
NT313	USB + LAN + 4G	Contain basic version , in addition to supporting 4G connection

The Sunmi logo, featuring the word "SUNMI" in a white, bold, sans-serif font. The background is a solid orange color with three large, semi-transparent orange circles in the corners: top-left, top-right, and bottom-right.

SUNMI

**Thank You**