

SUNMI T3 PRO MAX Smart Desktop Terminal

The next level of Android desktop.

Powered by
SUNMI OS

Compatible with
SUNMI DMP



Flagship performance unlocks extraordinary user experience.

High performance octa-core 6nm processor, up to 2.7Ghz. Equipped with large-capacity memory of 6GB RAM+128GB ROM delivers premium-tier features.

Pioneering in engineering.

The sleek yet durable aluminum alloy design strikes the perfect balance between weight, ruggedness and outlook. Bezel-less high definition display, comes with high-transparency anti-fingerprint coating.

Interactive design for an ultimate user perception.

Designed with NFC tab on screen for both the main screen and customer facing screen (optional). Easily detachable customer display that comes with a 1.5m extension cord to improve flexibility.

Have your device tailored to your brand.

Apply your logo and brand color to the device to show your brand personality.

A modular design with an internal high-speed 80mm Seiko printer.

Navigate your rush hours like a pro with quick printing. The printhead is easy to remove and install, greatly cutting your maintenance cost.

Display Options

15.6" +10.1"

Main 15.6" FHD,1920*1080
Secondary 10.1" HD, 1280*800



15.6" +15.6"

Main 15.6" FHD,1920*1080
Secondary 15.6" FHD,1920*1080



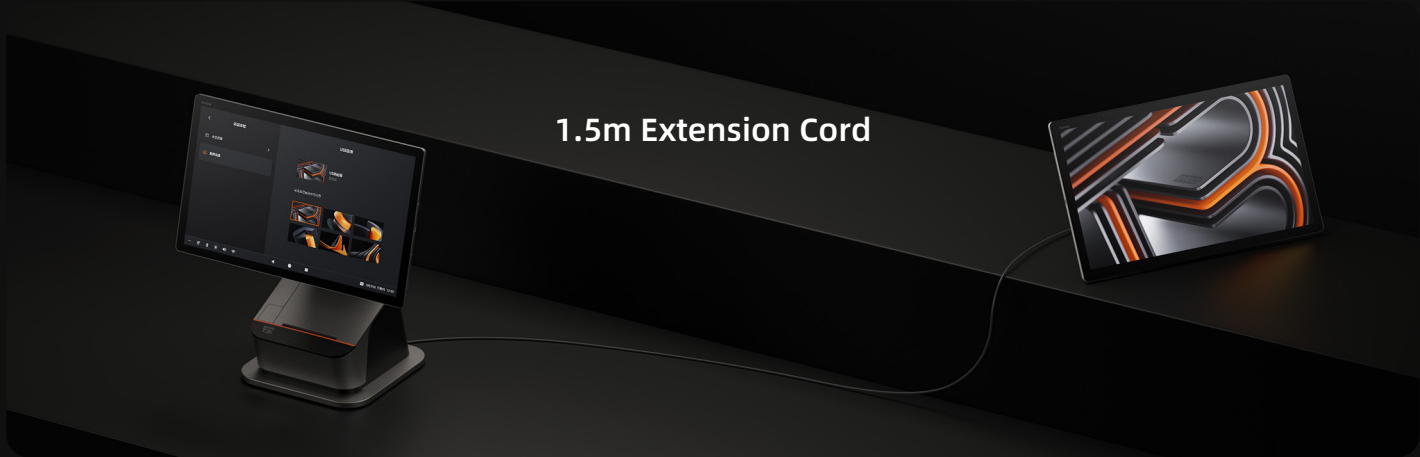
15.6"

Single 15.6" FHD,1920*1080

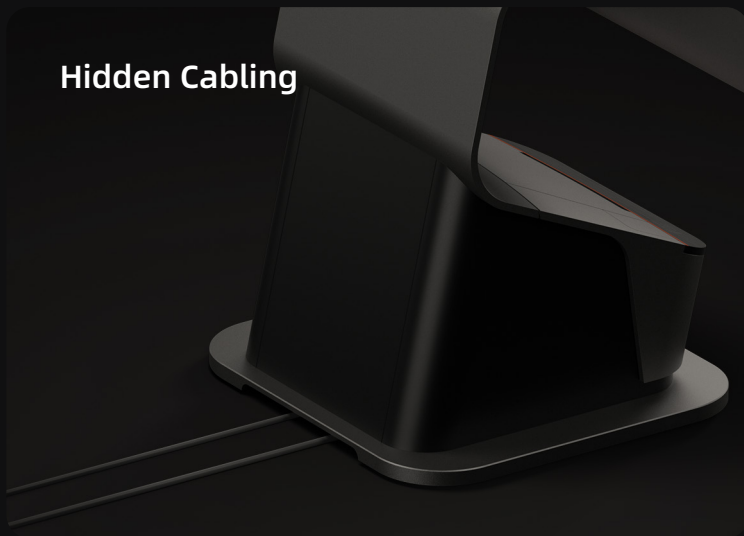


Flipable Main Display





1.5m Extension Cord



Hidden Cabling



Modular Design

SUNMI T3 PRO MAX Tech Specs

<p>Product Model L15A1</p>	<p>OS SUNMI OS (based on Android 13)</p>	<p>CPU Kyro-670 Qualcomm cota-core up to 2.7GHz</p>	<p>Memory 6GB RAM+128GB ROM</p>	<p>Display 15.6" FHD 1920*1080 400nits, anti-fingerprint (AF)</p>
<p>Camera Front camera, single lens, 8MP</p>	<p>Card Reader NFC under the screen</p>	<p>External Memory 1*MicroSD (TF card) Up to 2TB supported</p>	<p>Speaker 2* 2W</p>	<p>Network LAN 1000M</p>
<p>Wi-Fi 2.4GHz & 5GHz & 6GHz IEEE 802.11 a/b/g/n/ac/ax supported</p>	<p>Bluetooth Bluetooth 5.2 and BLE supported BT Long Range (farthest distance 200m) supported</p>	<p>Indicator Light Power indicator light</p>	<p>Ports 3*USB 2.0 Type A port 1*USB 3.0 Type A port 1*USB Type C 2*Micro USB port 1* Micro-USB debug port 1*RJ45 1*RJ11 1*RJ12 1*DC</p>	<p>Printer Built-in 80mm thermal printer Auto cutter: equipped Print speed: 250mm/s Paper roll OD: 80mm</p>
<p>Accessories 15.6" separate monitor, FHD 1920*1080 10.1" separate monitor, HD 1280*800</p>	<p>Power Adapter Input: AC 100~240V/1.7A Output: DC 24V/2.5A</p>	<p>Dimensions (L*W*H) 390mm*371.5mm*200mm</p>	<p>Weight T3 PRO MAX: 5.5kg 15.6" separate monitor: 1.7kg 10.1" separate monitor: 0.9kg</p>	<p>Buttons 1*Power button (lock screen and fingerprint recognition) 1*Download button (hidden hole)</p>
<p>Environment Operating temp.: 0°C~40°C Storage temp.: -20°C ~ 60°C</p>				

*Data regarding dimension and weight tested internally at SUNMI labs, actual results may be slightly different according to different measurement methods.